

# Software Update (ATX3/AURES)

This document contains instructions for updating the software of the ATX3/AURES piano. Please read these instructions thoroughly before attempting to perform the software update.

The update procedure is performed in three stages and may require up to 2 hours to complete fully.



The software update will clear any user-recorded songs stored in the instrument's memory. To retain this data, please use the Save Song function to save recordings to a USB memory device.

## ■ Update requirements

---

The software update will require a computer with internet access and an empty USB memory device.

\* The USB memory device should be formatted to use the 'FAT' or 'FAT32' filesystem.

## ■ Preparing for the update

---

After downloading the software update zip file, extract the contents to a temporary folder (e.g. the Desktop).



atx3aures\_v1xx.zip



atx3aures\_v1xx

The folder should contain four SYS files.

Filename	Filesize	Description
ATX3_040.SYS	1,024 KB	System software
ATX3_P06.SYS	3,200 KB	System software
CAx8Lapp.SYS	17,588 KB	Touchscreen software
CAx8Sapp.SYS	208 KB	Touchscreen software



ATX3\_040.SYS



ATX3\_P06.SYS



CAx8Lapp.SYS



CAx8Sapp.SYS

# Software Update (ATX3/AURES)

## Checking the system and touchscreen software version

The software update zip file contains updates for both the system software and touchscreen software of the ATX3/AURES piano. Depending on the version of the software currently running on the instrument, it may or may not be necessary to apply all of the update files.

Please refer to the instructions below to check the current system and touchscreen software version.

### ■ Checking the current system software version

While the ATX3/AURES piano is turned off:

Press and hold the left and right pedals (soft and damper) simultaneously, then press the POWER button to turn on the instrument.

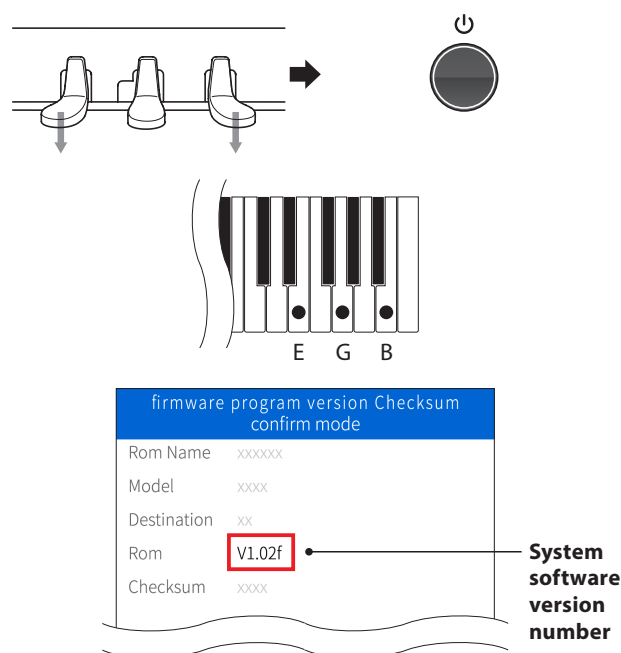
While the KAWAI logo is shown in the LCD display, press and hold the uppermost E, G, and B keys (see diagram).

The current system software version will be shown in the LCD display.

If the system software version number and letter is greater than or equal to the update zip file filename, no further action is necessary.

\* Press and hold the POWER button to turn the instrument off.

If the system software version number and letter is lower than the update version, please follow stage 1 of the update instructions: "System software update".



### ■ Checking the current touchscreen software version

While the ATX3/AURES piano is turned on:

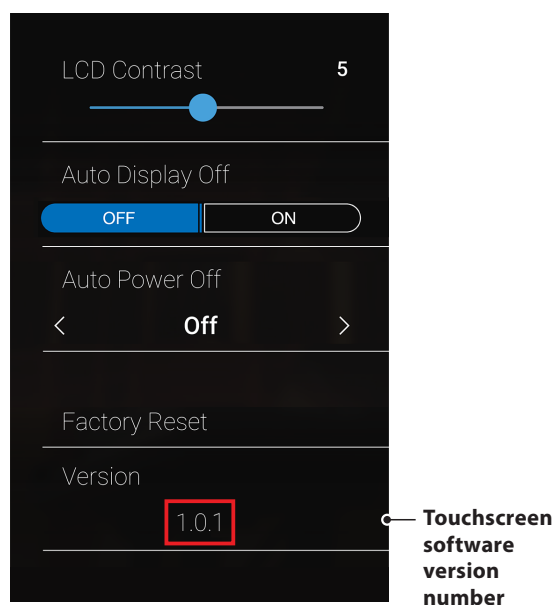
From the Pianist mode screen, tap the [MENU] button, then select [Settings] and scroll to the bottom of the menu.

The current touchscreen software version will be shown in the LCD display.

If the touchscreen software version number is greater than or equal to the update zip file filename, no further action is necessary.

\* Exit the menu to return to normal operation.

If the touchscreen software version number is lower than the update version, please follow stages 2 & 3 of the update instructions: "LCD touchscreen software update".



If the current touchscreen software version is shown as v1.0.2, it will not be necessary to apply the touchscreen software update (stages 2 & 3).

In this case, only the system software update (stage 1) will be necessary.

# Software Update (ATX3/AURES)

## 1 System software update

The first stage will update the system software of the ATX3/AURES piano.

This procedure will require approximately 2 minutes to complete.

### 1. Format the USB memory device

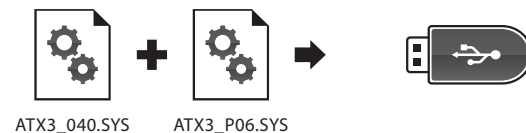
Using a computer, format the USB memory device to ensure that the device is empty.



\* The USB device should be formatted to the 'FAT' or 'FAT32' filesystem.

### 2. Copy the update file to the USB memory device

Copy the `ATX3_040.SYS` and `ATX3_P06.SYS` files from the temporary folder to the root folder of the formatted USB memory device.



### 3. Connect the USB memory device, turn on the power

While the ATX3/AURES piano is turned off:

Connect the prepared USB memory device to the instrument.



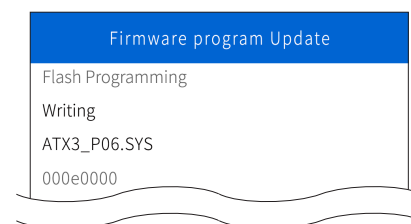
Press and hold the POWER button, until the KAWAI logo is shown in the LCD display.



The Firmware program Update screen will be shown, and the update process will start automatically, with status messages shown in the LCD display.

\* Do not disconnect the USB memory device or turn off the instrument while the update is in progress.

\* If the update screen does not appear, wait 5 minutes, disconnect the instrument's power, then reconnect and retry this step.



### 4. Finish the update, disconnect the USB memory device

After approximately 1 minute a [Boot End] message will be shown in the LCD display, indicating that the first stage of the update has been successful.

Disconnect the USB memory device, then press and hold the POWER button to turn off the instrument.

When the instrument is turned on, the updated system software will be used automatically.

\* If this stage of the update is unsuccessful, restart from step 1.

Stage complete

Boot End

電源ボタンを7秒以上押し続け、  
本体の電気をお切りください。  
Press and hold the power switch 7 seconds  
to turn off.

# Software Update (ATX3/AURES)

## 2 LCD touchscreen software update (1/2)

The second stage will update the LCD touchscreen software of the ATX3/AURES piano.

This procedure will require approximately 10 minutes to complete.

### 1. Format the USB memory device

Using a computer, format the USB memory device to ensure that the device is empty.



\* The USB device should be formatted to the 'FAT' or 'FAT32' filesystem.

### 2. Copy the update file to the USB memory device

Copy the CAx8Sapp.SYS file from the temporary folder to the root folder of the formatted USB memory device.

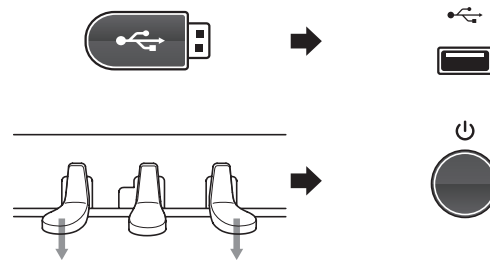


### 3. Connect the USB memory device, turn on the power

While the ATX3/AURES piano is turned off:

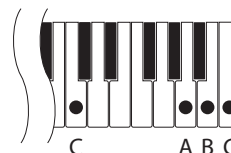
Connect the prepared USB memory device to the instrument.

Press and hold the left and right pedals (soft and damper) simultaneously, then press the POWER button to turn on the instrument.



While the KAWAI logo is shown in the LCD display, press and hold the uppermost C, A, B, and C keys (see diagram).

The touchscreen software update screen will be shown.

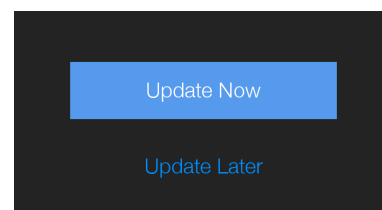


### 4. Start the update

Tap the [Update Now] button to start the update process.

The update status and percentage progress will be shown in the LCD display.

\* Do not disconnect the USB memory device or turn off the instrument while the update is in progress.



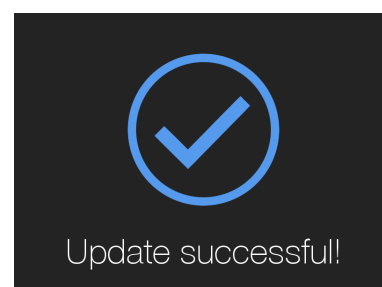
### 5. Finish the update, disconnect the USB memory device

After approximately 10 minutes an [Update successful!] message will be shown in the LCD display.

Disconnect the USB memory device, then press and hold the POWER button to turn off the instrument.

Next, continue to stage 3.

\* If this stage of the update is unsuccessful, restart from step 1.



# Software Update (ATX3/AURES)

## 3 LCD touchscreen software update (2/2)

The third and final stage will complete the LCD touchscreen software of the ATX3/AURES piano.  
This procedure will require approximately 120 minutes to complete.

### 1. Format the USB memory device

Using a computer, format the USB memory device to ensure that the device is empty.



\* The USB device should be formatted to the 'FAT' or 'FAT32' filesystem.

### 2. Copy the update file to the USB memory device

Copy the **CAx8Lapp.SYS** file from the temporary folder to the root folder of the formatted USB memory device.

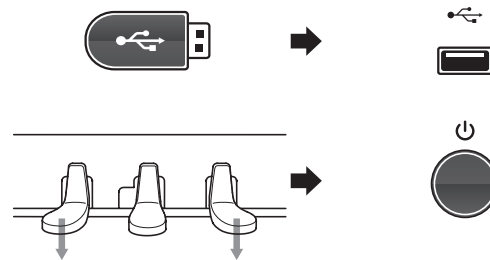


### 3. Connect the USB memory device, turn on the power

While the ATX3/AURES piano is turned off:

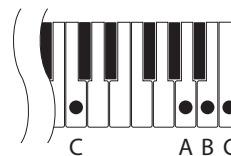
Connect the prepared USB memory device to the instrument.

Press and hold the left and right pedals (soft and damper) simultaneously, then press the POWER button to turn on the instrument.



While the KAWAI logo is shown in the LCD display, press and hold the uppermost **C, A, B, and C** keys (see diagram).

The touchscreen software update screen will be shown.

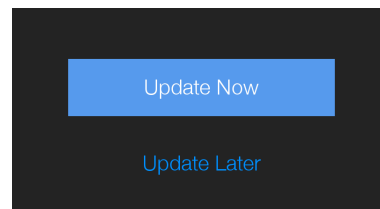


### 4. Start the update

Tap the [Update Now] button to start the update process.

The update status and percentage progress will be shown in the LCD display.

\* Do not disconnect the USB memory device or turn off the instrument while the update is in progress.



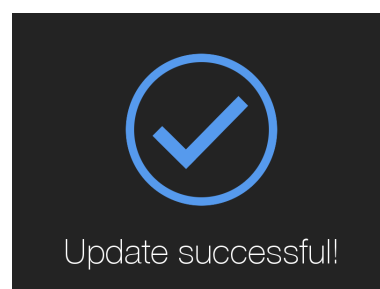
### 5. Finish the update, disconnect the USB memory device

After approximately 120 minutes an [Update successful!] message will be shown in the LCD display.

Disconnect the USB memory device, then press and hold the POWER button to turn off the instrument.

When the instrument is turned on, the updated touchscreen software will be used automatically.

\* If this stage of the update is unsuccessful, restart from step 1.



## Troubleshooting

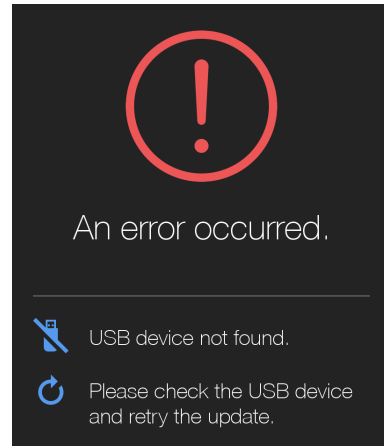
### ■ Update error messages

If an error message is displayed during the update process, please take the following actions depending on the error.

#### **USB device not found.**

The ATX3/AURES piano does not recognise the connected USB memory device.

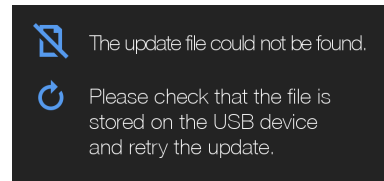
- ➔ Check that the USB memory device is properly connected.
- ➔ Check that the USB memory device is not broken.
- ➔ Check that the USB memory device is formatted to use the 'FAT' or 'FAT32' filesystem.



#### **The update file could not be found.**

The ATX3/AURES piano could not find the update file stored on the connected USB memory device.

- ➔ Check that either the **Cx8Sapp.SYS** or **Cx8Lapp.SYS** update file is stored in the root folder of the USB memory device.
- ➔ As a precaution, remove any other files or folders that may be stored on the USB memory device.



#### **The update file could not be read.**

The ATX3/AURES piano encountered a problem while trying to read the update file stored on the connected USB memory device.

- ➔ Turn off the ATX3/AURES piano, remove the USB memory device, and restart the update process from step 2 (Connecting the USB memory device).

